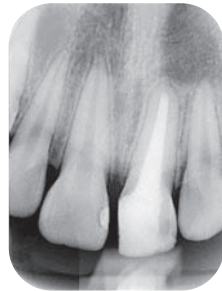
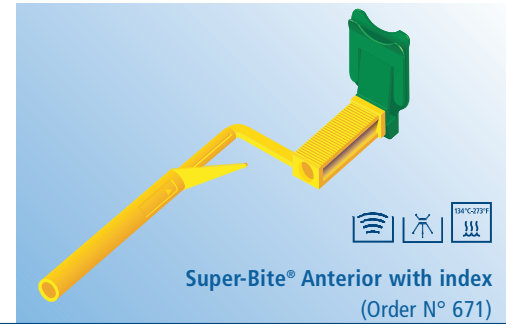
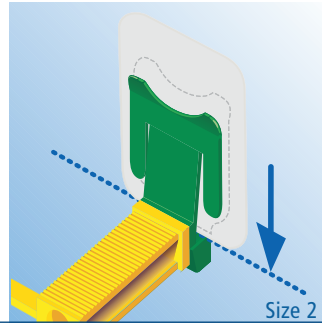


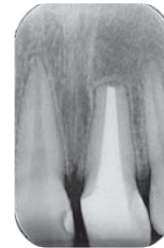
Super-Bite® Anterior



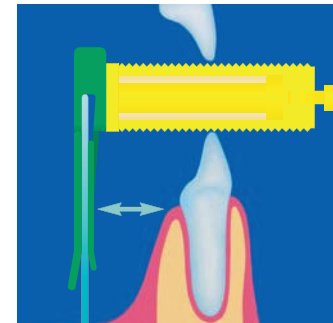
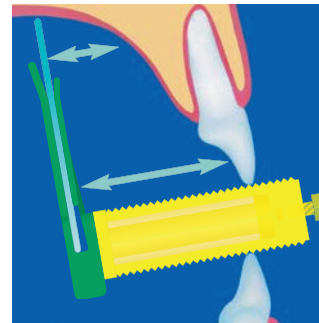
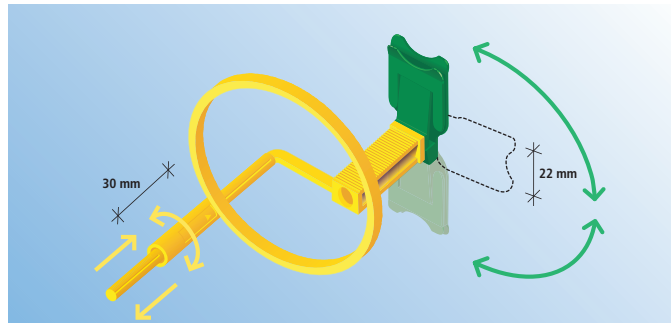
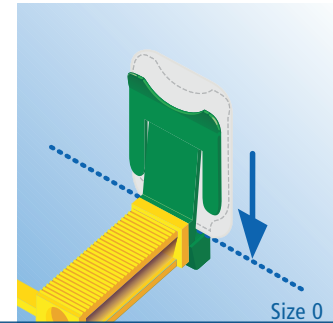
Size 2



For better results



Size 0



EP Pat. 0 397 599 / US Pat. 5 044 009 / EP Pat. 1 256 838 / US Pat. 6 592 256

504894-11-09

Manufactured by KerrHawe SA
Via Strece 4, 6934 Bioggio
Switzerland
www.KerrHawe.com
00800 41 05 05 05



Kerr U.S.A.
1717 West Collins Avenue
Orange, CA 92867
(800) KERR-123
KerrDental.com

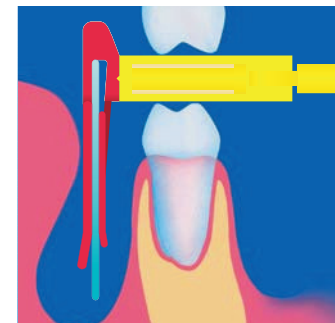
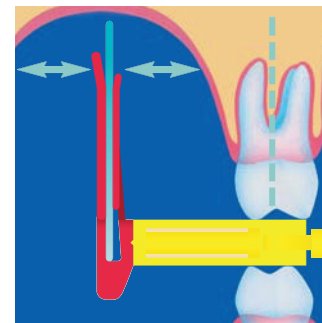
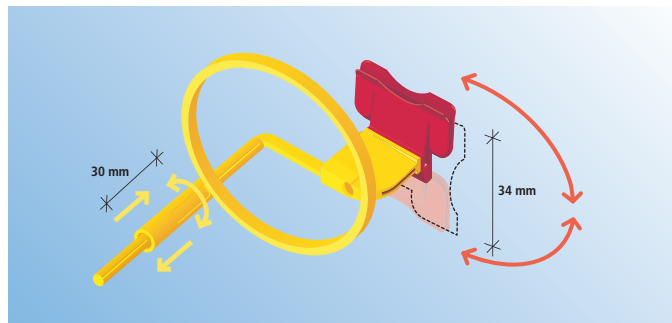
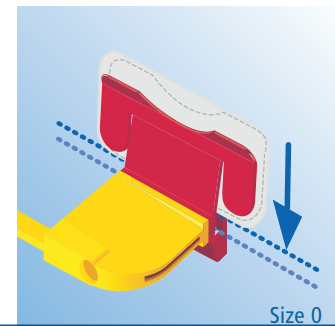
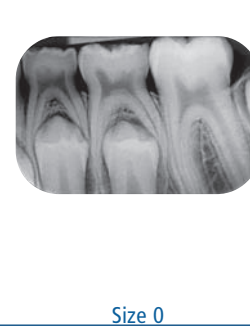
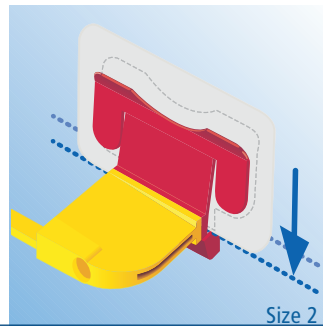
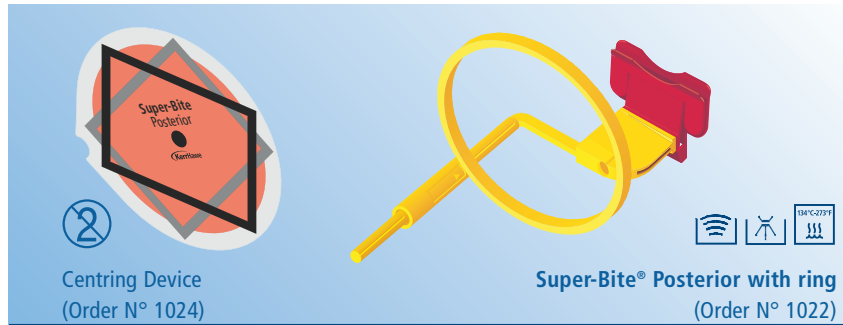
Kerr Australia Pty. Ltd.
Unit 11
112-118 Talavera Road
North Ryde 2113
New South Wales, Australia
61-29-870-7500

Sybron Dental Specialities Japan, Inc.
29-24 Honkomagone 2-chome
Bunkyo-ku, Tokyo
113-0021 Japan
0120-18-3126

Metrex® Research
28210 Wick Road
Romulus, MI 48174 USA
Phone: 001 714 516 7400
Fax: 001 714 516 7581
www.kerrtotalcare.com



Super-Bite® Posterior



EP Pat. 0 397 599 / US Pat. 5 044 009 / EP Pat. 1 256 838 / US Pat. 6 592 256

Manufactured by KerrHawe SA
Via Strece 4, 6934 Bioggio
Switzerland
www.KerrHawe.com
00800 41 05 05 05



Kerr U.S.A.
1717 West Collins Avenue
Orange, CA 92867
(800) KERR-123
KerrDental.com

Kerr Australia Pty. Ltd.
Unit 11
112-118 Talavera Road
North Ryde 2113
New South Wales, Australia
61-29-870-7500

Sybron Dental Specialities Japan, Inc.
29-24 Honkomagone 2-chome
Bunkyo-ku, Tokyo
113-0021 Japan
0120-18-3126

Metrex® Research
28210 Wick Road
Romulus, MI 48174 USA
Phone: 001 714 516 7400
Fax: 001 714 516 7581
www.kerrtotalcare.com

